



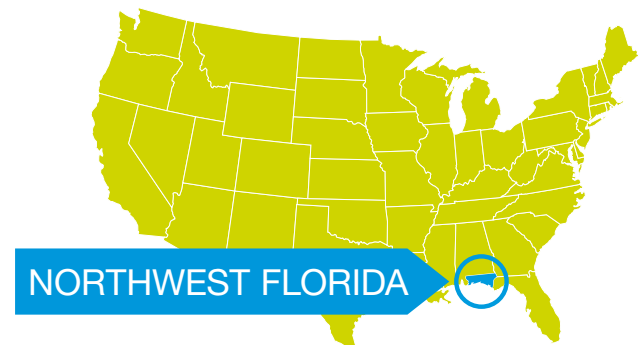
Visit FloridaFirstSites.com

Northwest Florida Industrial Park @ I-10

Certified & Ready for Business

88 Acre Site Ready for Industrial Development

Gulf Power Company launched the Florida First Sites program to add project-ready industrial sites to Northwest Florida's portfolio of competitive advantages. For more information, visit FloridaFirstSites.com.



Distinctions of Site Certification

- » Offers a Detailed Analysis by an International Site Selection Firm
- » Completes Due Diligence Items
- » Reduces Risk Factors
- » Accelerates Speed to Market
- » Cuts Site Development Costs



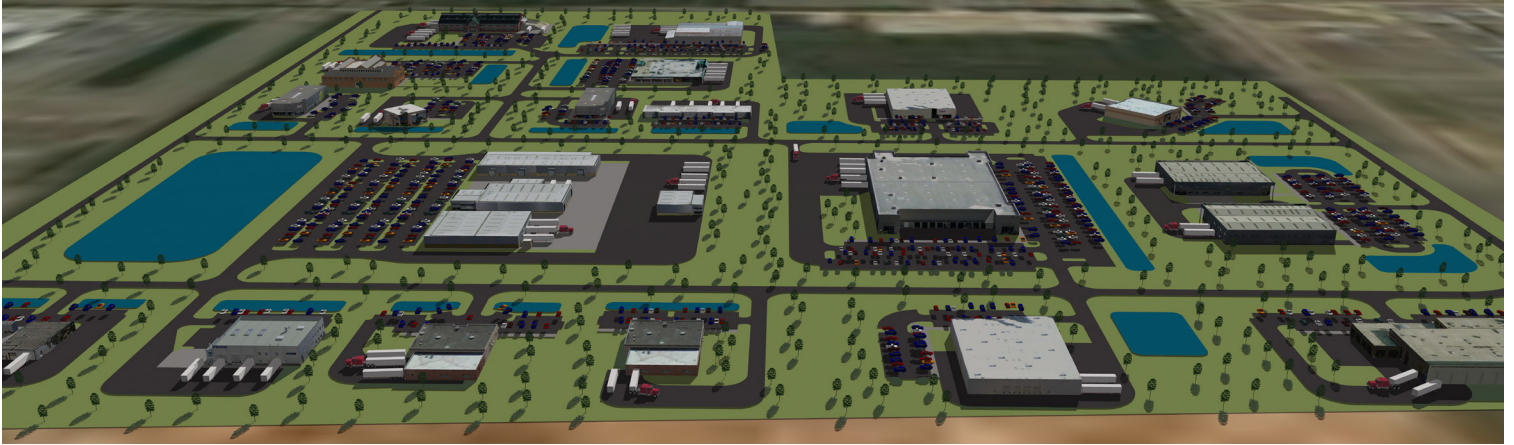
Rick Byars
Regional Manager
Gulf Power Company
850.444.6750
Charles.Byars@nexteraenergy.com



Shannon Ogletree
Director, Santa Rosa County, FL
Economic Development Office
850.623.0174
edo@santarosa.fl.gov

Northwest Florida Industrial Park @ I-10

Certified & Ready for Business



Florida First Sites

FloridaFirstSites.com



Site Readiness

Acreage	88 Developable; Contiguous
Location	Milton, Santa Rosa County, FL Latitude: 30.611064, Longitude: -86.952925
Airport	25 miles from Pensacola International Airport (PNS)
Sea Port	28 miles from the Port of Pensacola
Rail	Site is not rail served
Interstate & US Highway	Less than 1 mile from I-10 & accessed by Hwy. 87
Electric	Gulf Power Company: 12.47 kV 3-phase distribution line 200 feet from the park
Natural Gas	City of Milton: 2-inch line
Water	East Milton Water Systems: 10-inch line and 12-inch main; 4.7 mgd available capacity
Sewer	City of Milton: 8-inch line with 435,000 gpd available capacity
Telecommunications	AT&T Florida: Infrastructure within 500 feet of the park

Advantages of NWFL Industrial Park @ I-10

- » Close proximity to major transportation corridor Interstate 10
- » Large site size
- » Competitive operating costs
- » Close to all major Southeastern markets
- » Significant concentration of military installations in the region which provides access to a highly skilled talent pool due to military separations
- » Access to numerous regional workforce training assets:
 - » 4 Universities
 - » 4 Colleges
 - » 6 Vocational Schools